



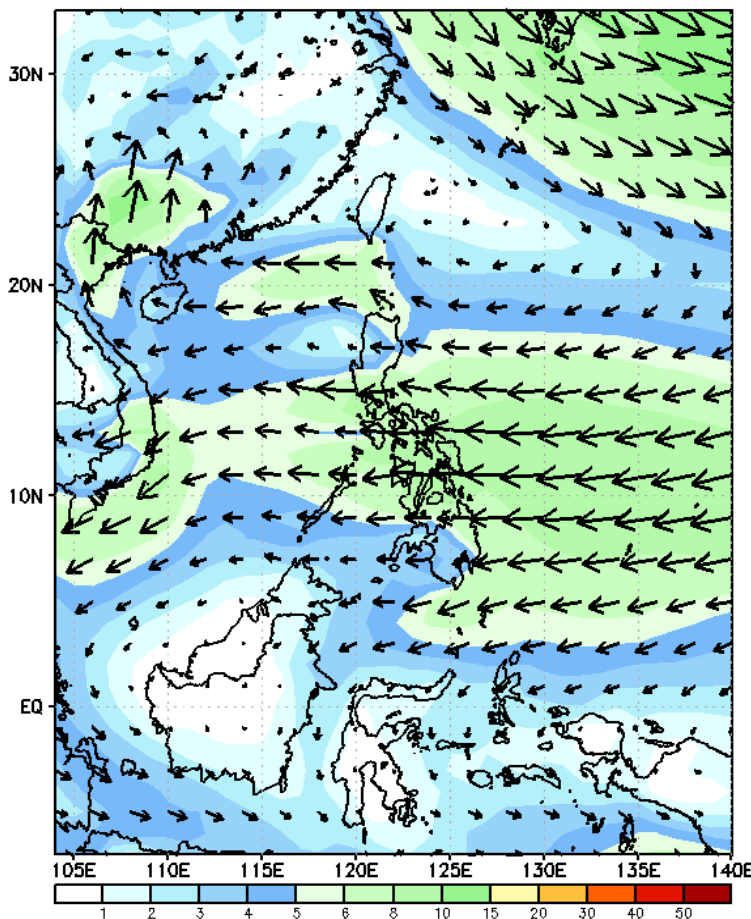
Week 1 & Week 2 Forecast for the Philippines using GEFS Model



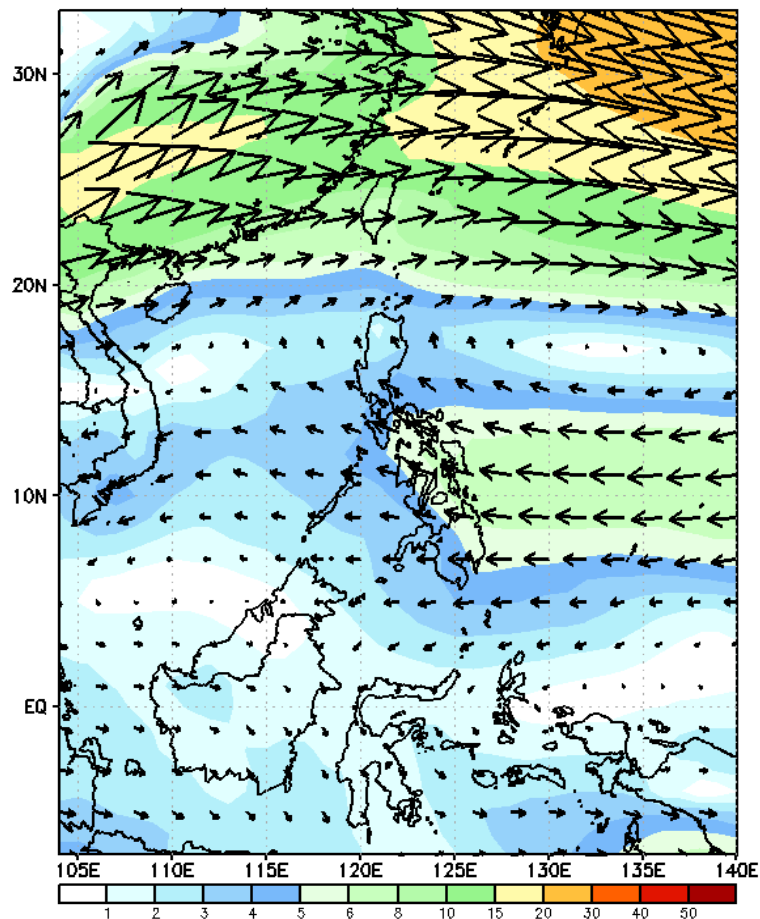
GEFS Week-1 Wind Forecasts:

Week 1: Feb 14-20, 2025

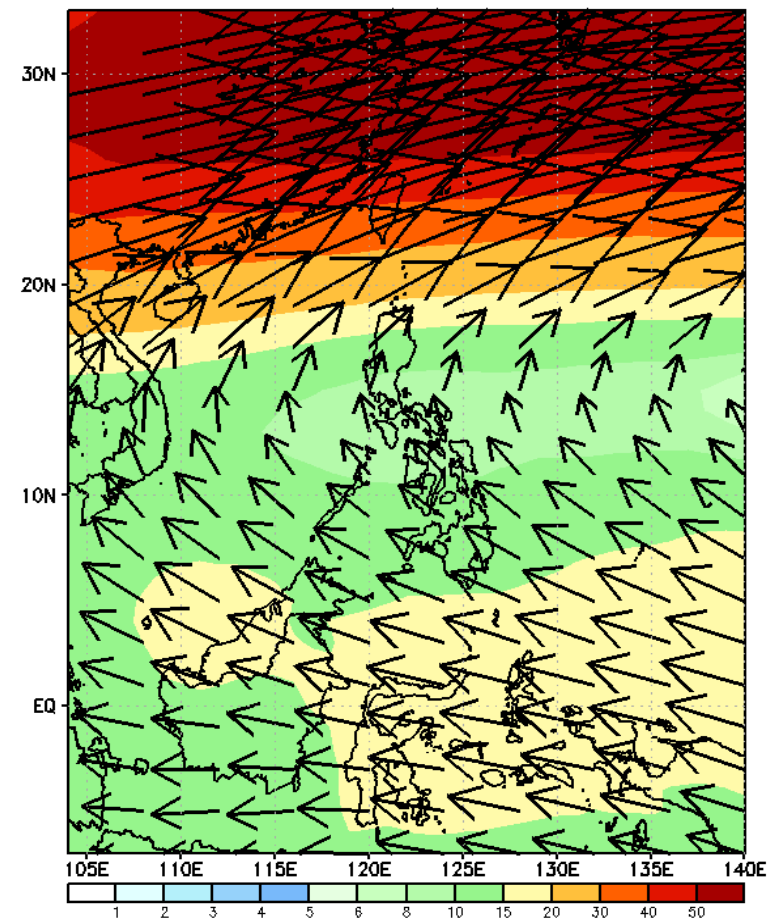
GEFS Week-1 850-hPa Wind Total
Valid: 20250214 - 20250220



GEFS Week-1 700-hPa Wind Total
Valid: 20250214 - 20250220

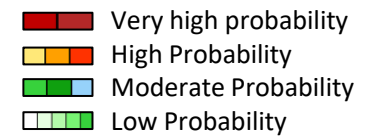


GEFS Week-1 200-hPa Wind Total
Valid: 20250214 - 20250220



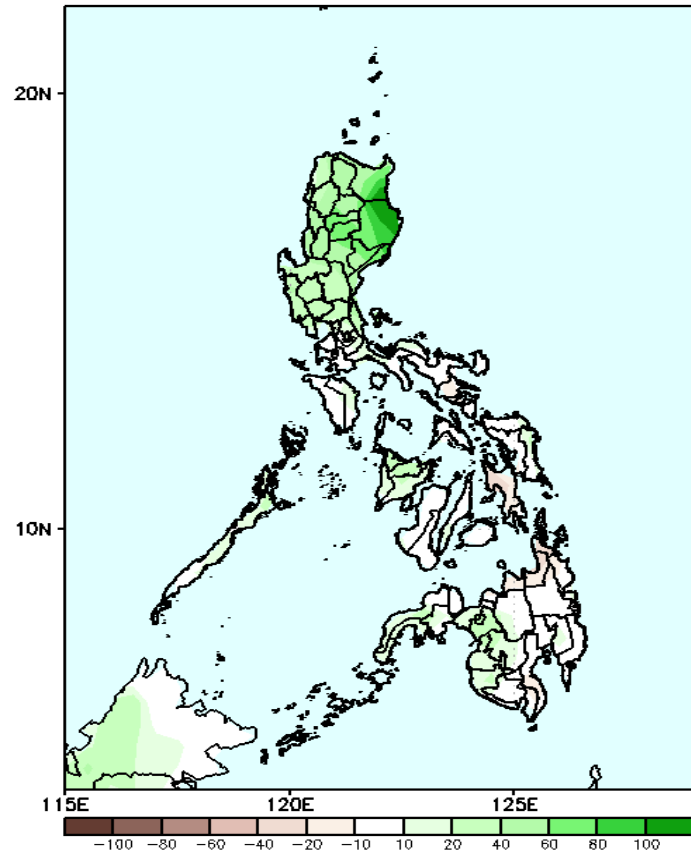
Northeast Monsoon affecting Northern Luzon while Easterlies affecting the rest of the country during the forecast period

Precipitation Anomaly and Exceedance Probability > 25/50 mm



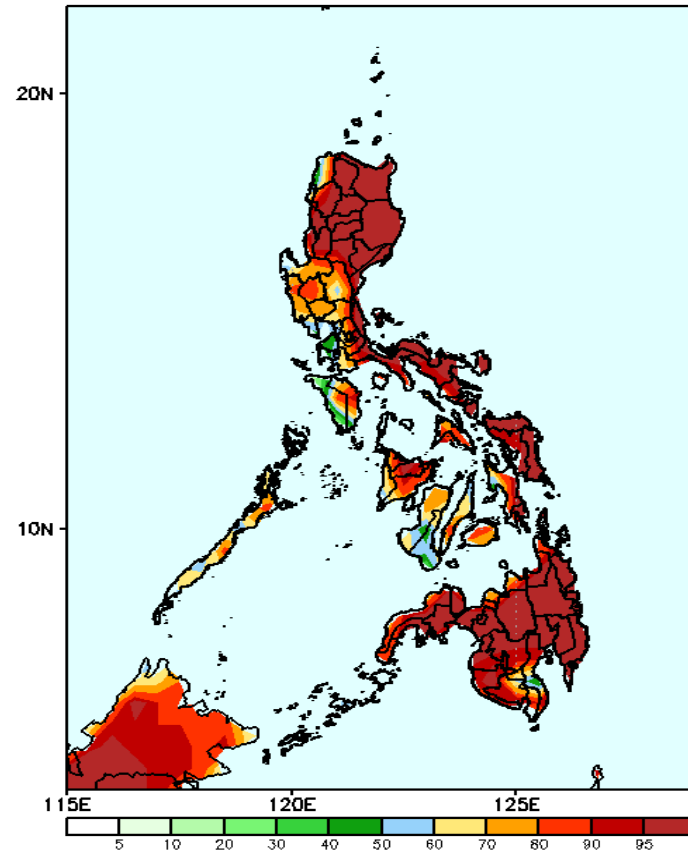
Week 1: Feb 14-20, 2025

GEFS Week-1 Precip Anomaly
Valid: 20250214 - 20250220



Increase of rainfall of 40-100mm is expected in most parts of northern and central Luzon; 10-40mm increase of rainfall in southern Luzon, Panay Island and western Mindanao.

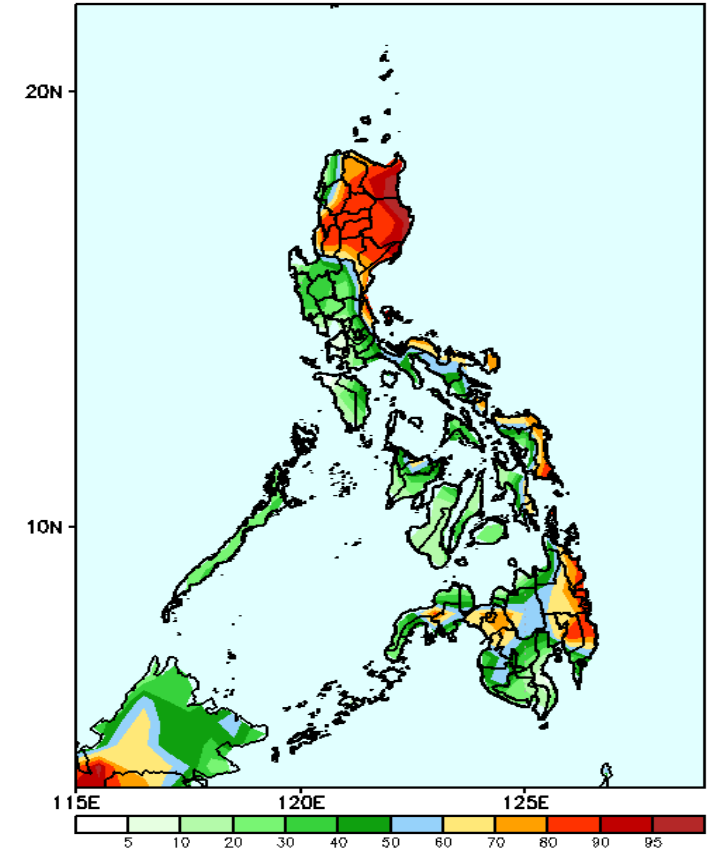
GEFS Week-1 Exceedance Prob. > 25mm
Valid: 20250214 - 20250220



Probability to Exceed 25mm

- High to very high over most parts of the country;
- Moderate to high over Cavite, Batangas, MIROPA and Negros Island.

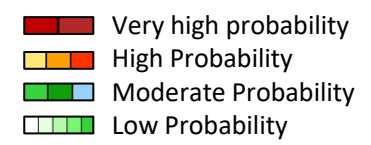
GEFS Week-1 Exceedance Prob. > 50mm
Valid: 20250214 - 20250220



Probability to Exceed 50mm

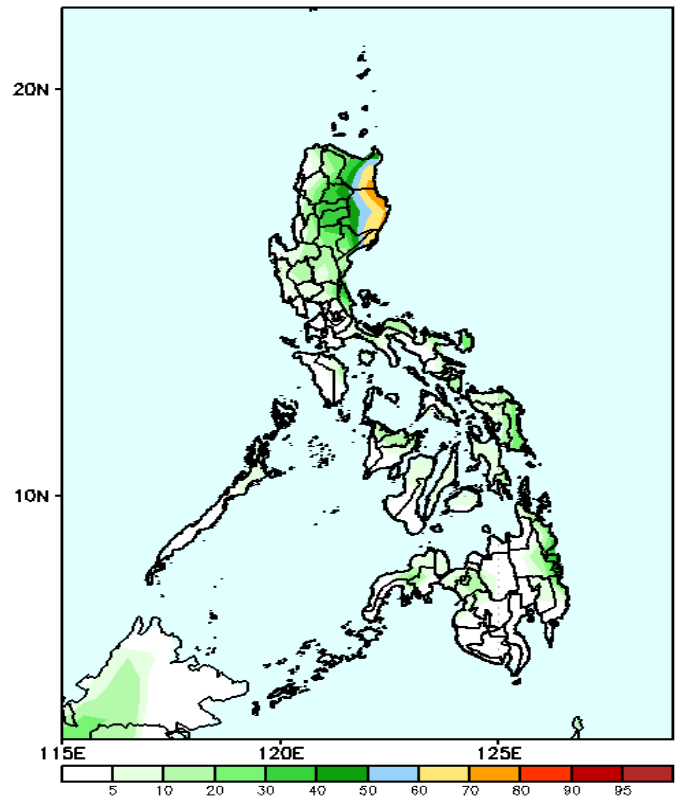
- High to very high over most of CAR and Cagayan Valley;
- Moderate to high over Ilocos Region, Aurora, Quezon, Bicol Region, Romblon, Marinduque, Aklan, Capiz, Eastern Visayas, and most parts of Mindanao;
- Low to moderate over the rest of the country.

Exceedance Probability > 100/150/200 mm



Week 1: Feb 14-20, 2025

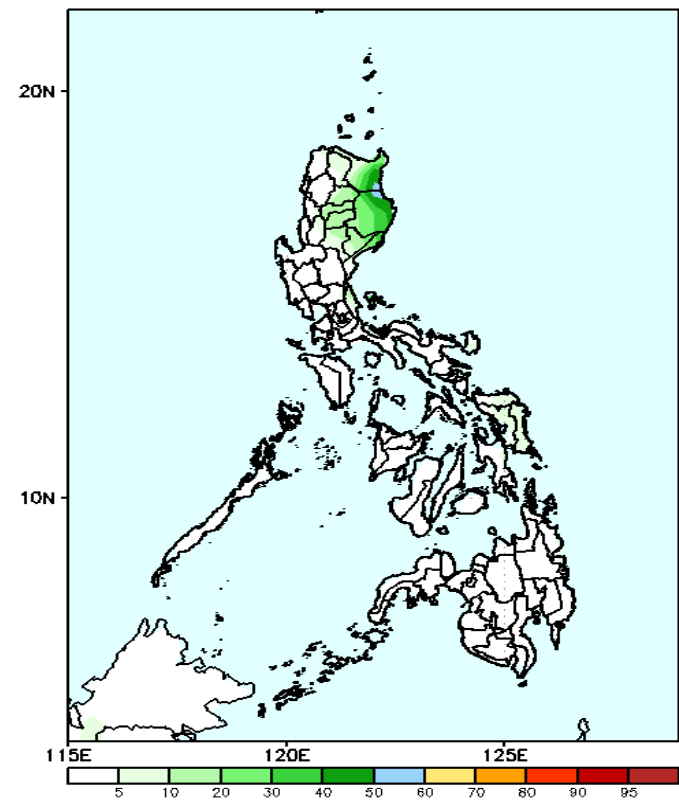
GEFS Week-1 Exceedance Prob. > 100mm
Valid: 20250214 - 20250220



Probability to Exceed 100mm

- Moderate to high over Cagayan and Isabela, and the northern part of Aurora;
- Low to moderate over the rest of the country.

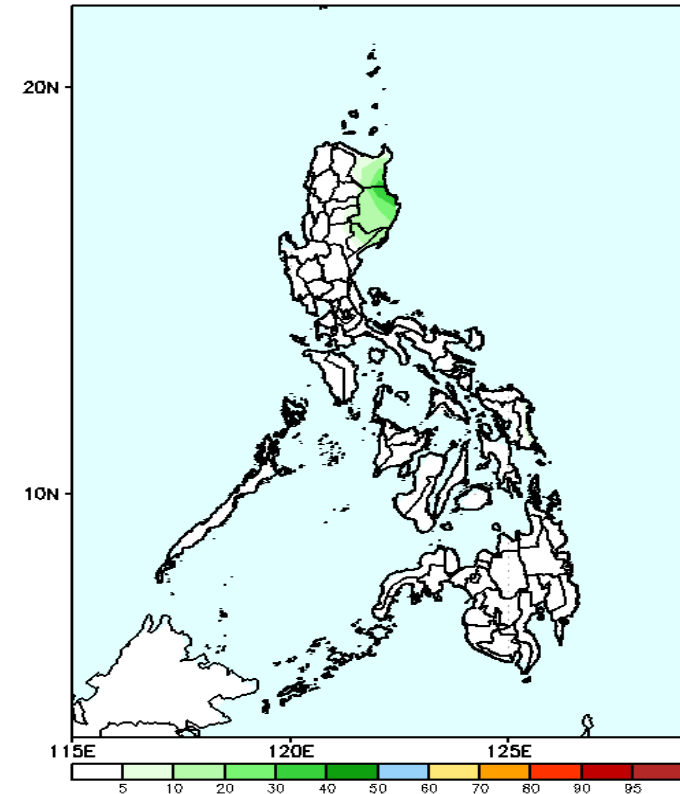
GEFS Week-1 Exceedance Prob. > 150mm
Valid: 20250214 - 20250220



Probability to Exceed 150mm

- Low to moderate over the easternmost sections of Cagayan and Isabela;
- Low over the rest of the country;

GEFS Week-1 Exceedance Prob. > 200mm
Valid: 20250214 - 20250220



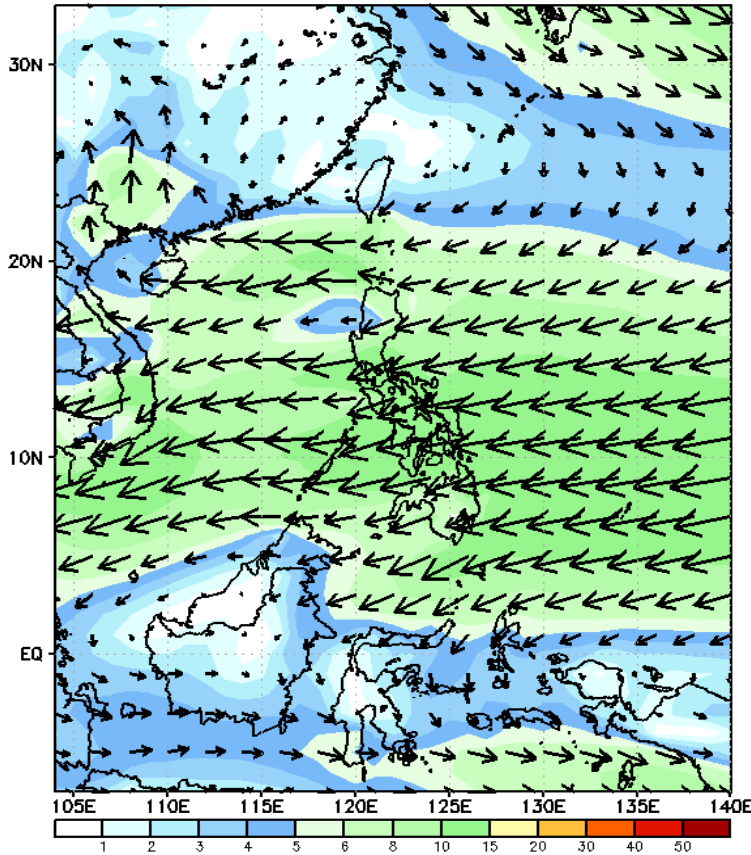
Probability to Exceed 200mm

- Low across the country

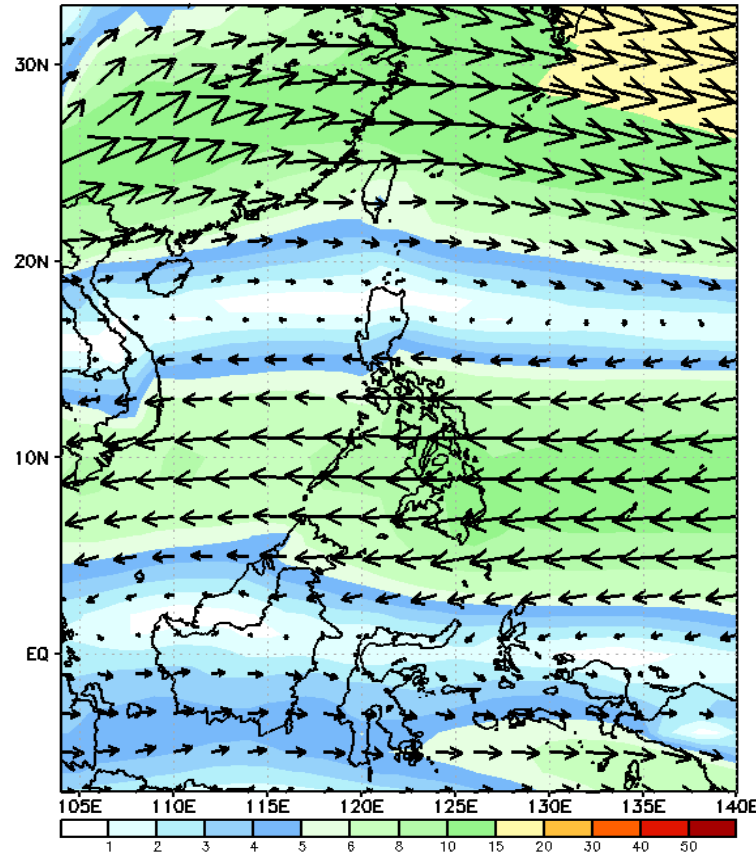
GEFS Week-2 Wind Forecasts:

Week 2: Feb 21-27, 2025

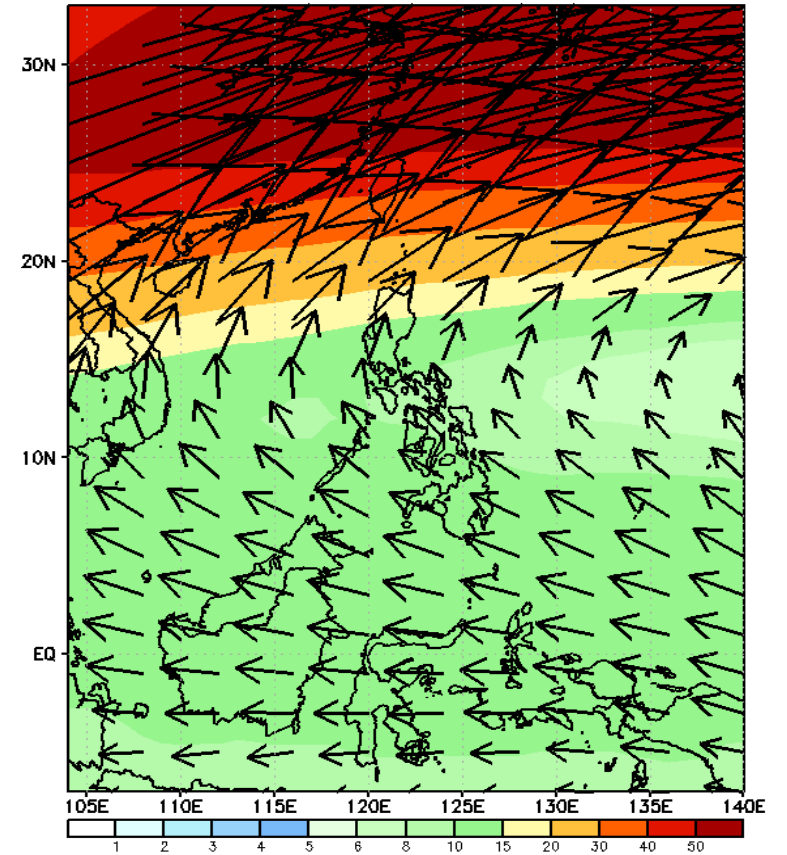
GEFS Week-2 850-hPa Wind Total
Valid: 20250221 - 20250227



GEFS Week-2 700-hPa Wind Total
Valid: 20250221 - 20250227

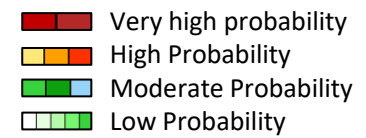


GEFS Week-2 200-hPa Wind Total
Valid: 20250221 - 20250227



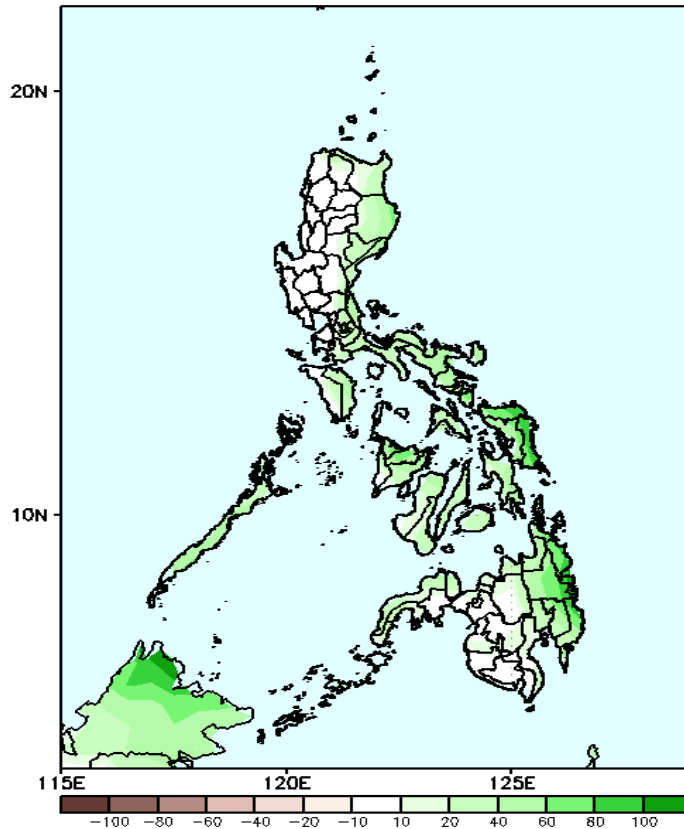
Northeast Monsoon affecting Northern and Central Luzon while Easterlies affecting the rest of the country during the forecast period

Precipitation Anomaly and Exceedance Probability > 25/50 mm



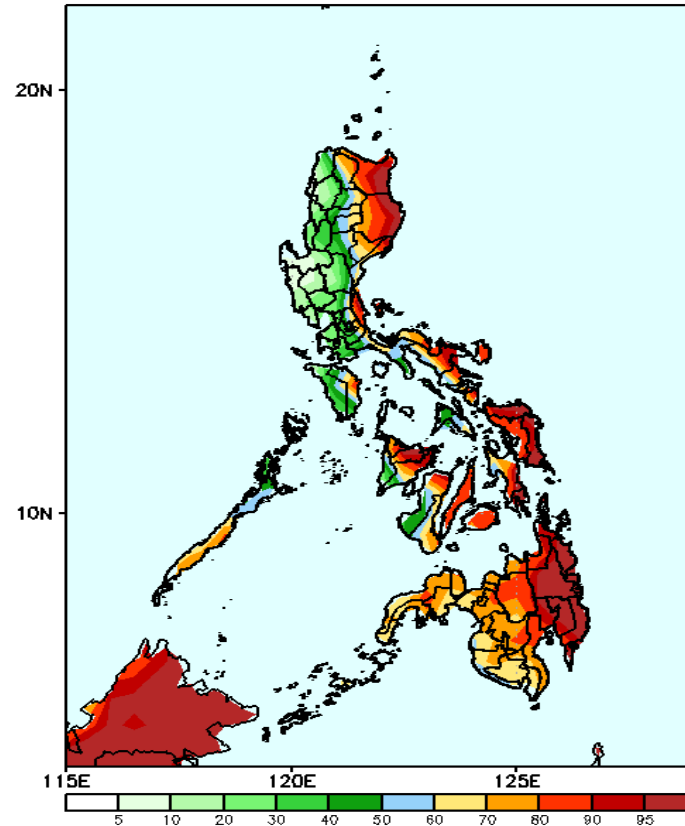
Week 2: Feb 21-27, 2025

GEFS Week-2 Precip Anomaly
Valid: 20250221 - 20250227



Increase of rainfall of 40-100mm is expected in eastern and southern parts of Luzon, most parts of Visayas, Zamboanga Peninsula and eastern Mindanao.

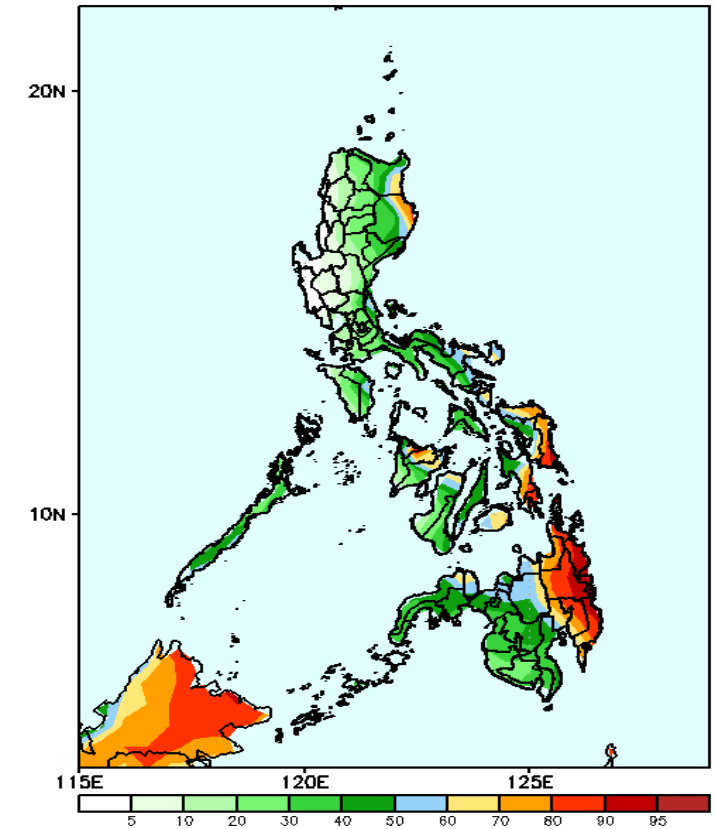
GEFS Week-2 Exceedance Prob. > 25mm
Valid: 20250221 - 20250227



Probability to Exceed 25mm

- High to very high over most parts over the eastern parts of the country;
- Moderate to high over southern Luzon, the rest of Visayas and Mindanao;
- Low to moderate over the rest of Luzon

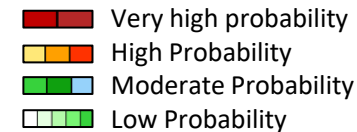
GEFS Week-2 Exceedance Prob. > 50mm
Valid: 20250221 - 20250227



Probability to Exceed 50mm

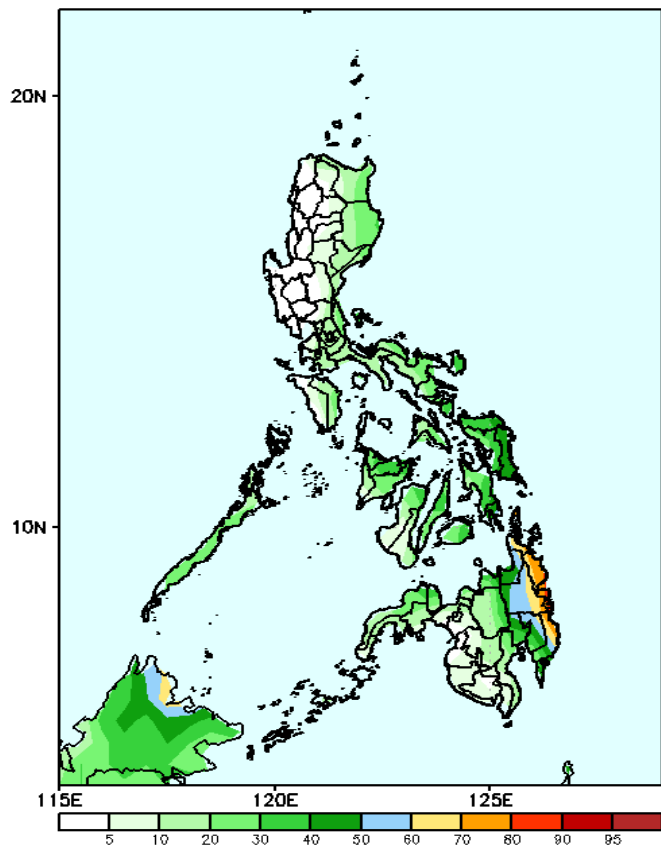
- High to very high over Eastern Mindanao;
- Moderate to high over the eastern part of Luzon, Romblon, Marinduque, southern part of Palawan, Aklan, Capiz, northern parts of Iloilo and Negros Occidental, Central and Eastern Visayas, and the rest of Mindanao;
- Low to moderate over the rest of Luzon and Visayas.

Exceedance Probability > 100/150/200 mm



Week 2: Feb 21-27, 2025

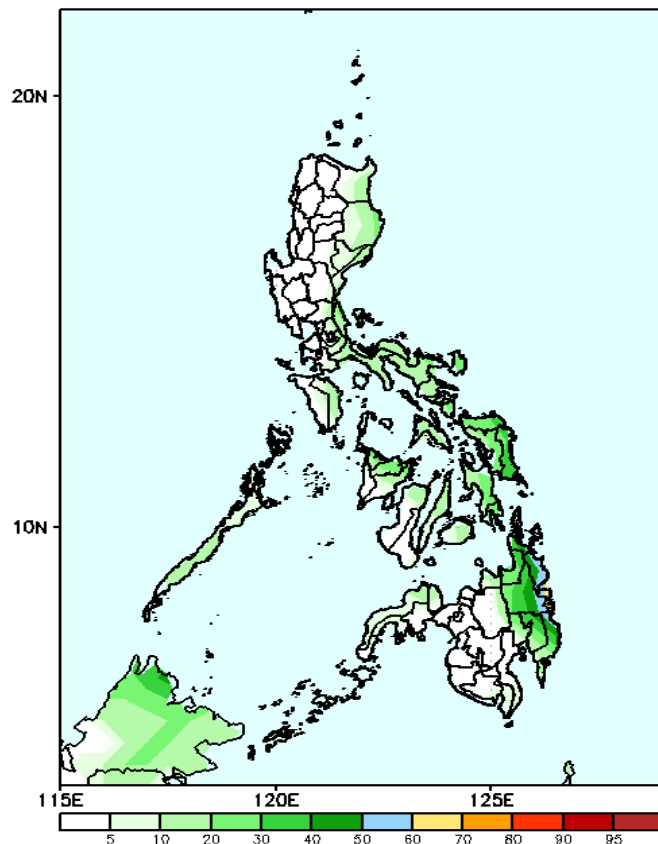
GEFS Week-2 Exceedance Prob. > 100mm
Valid: 20250221 - 20250227



Probability to Exceed 100mm

- Moderate over Eastern Mindanao;
- Low to moderate over the rest of the country.

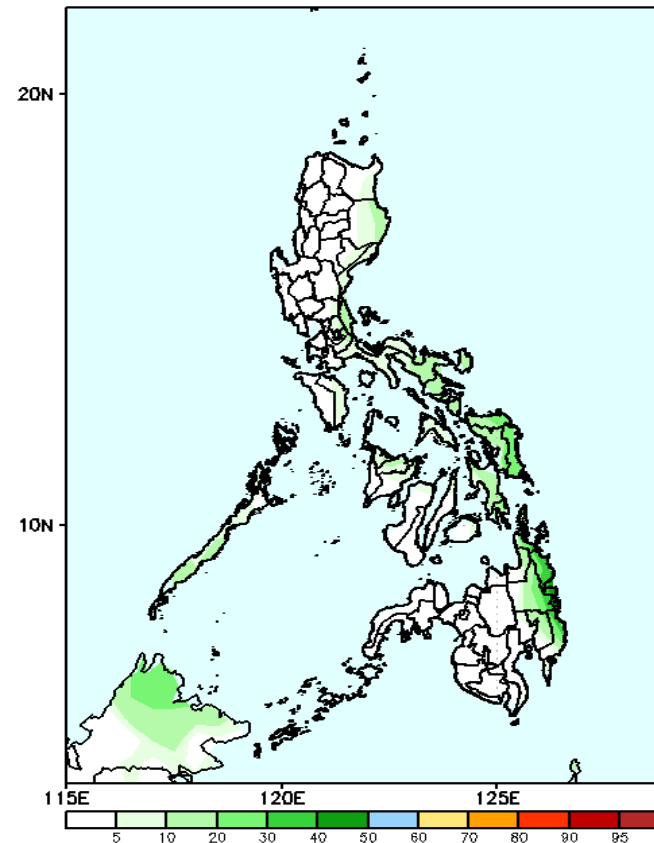
GEFS Week-2 Exceedance Prob. > 150mm
Valid: 20250221 - 20250227



Probability to Exceed 150mm

- Moderate to high over Eastern Mindanao;
- Low over the rest of the country.

GEFS Week-2 Exceedance Prob. > 200mm
Valid: 20250221 - 20250227

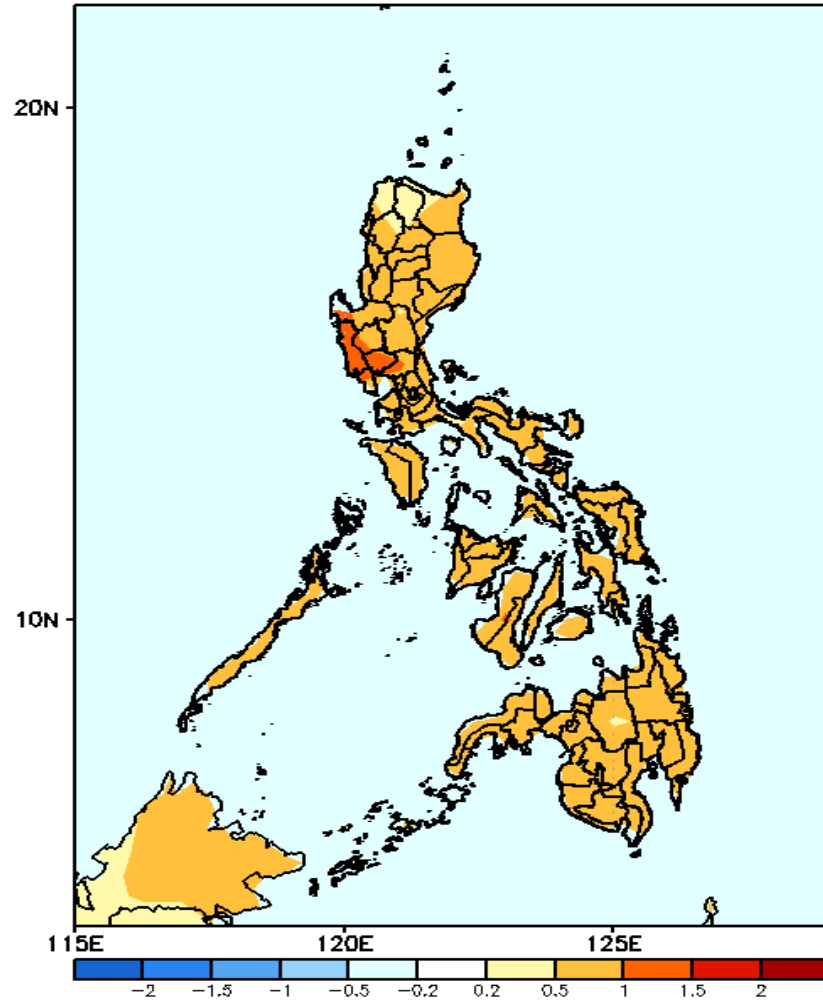


Probability to Exceed 200mm

- Low across the country.

GEFS Week-1 & 2 Forecasts: T2m Anomaly

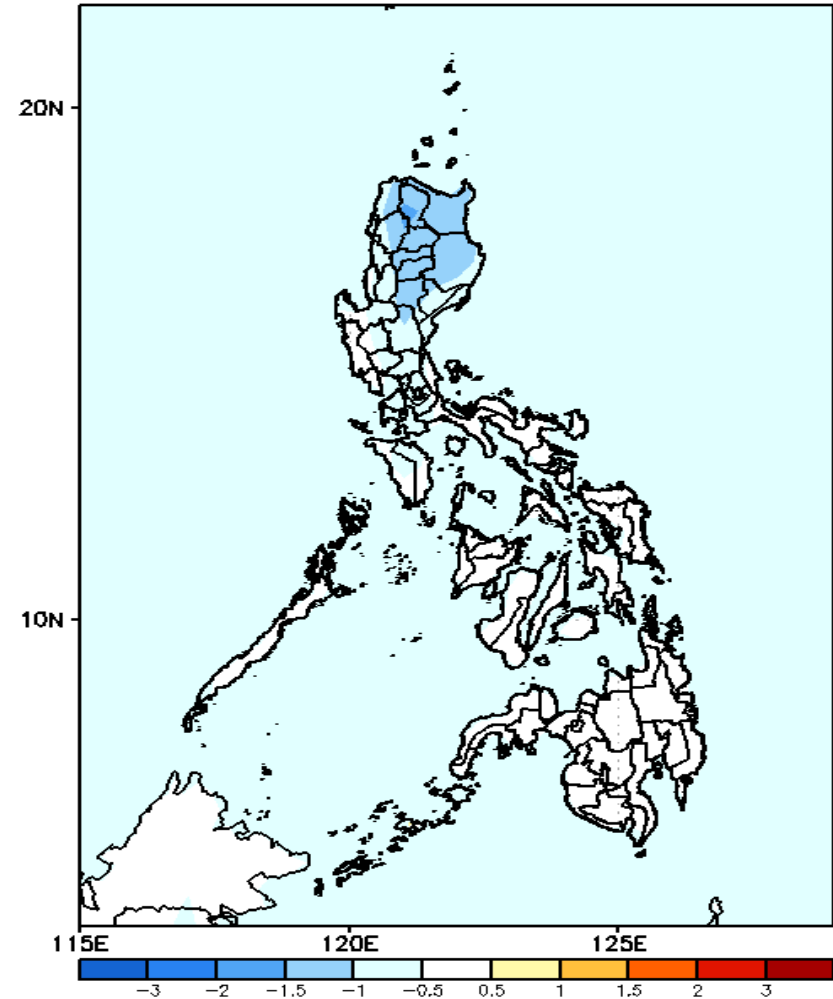
GEFS Week-1 T2m Anomaly
Valid: 20250214 - 20250220



2m Temperature Week 1: Feb 14-20, 2025

Slightly warmer to warmer than average surface air temperature will likely be experienced in most parts of the country.

GEFS Week-2 T2m Anomaly
Valid: 20250221 - 20250227



2m Temperature Week 2: Feb 21-27, 2025

Near to slightly cooler than average surface air temperature will likely be experienced in Luzon while near average temperature is expected in Visayas and Mindanao.